

# MSc in Obstetric and Midwifery Care 2024-2026

## 2-Year Part-Time Postgraduate Programme



QS World University Rankings 2023  
Faculty of Medicine, CUHK  
**32nd** in the world

Times Higher Education Rankings 2023  
The Chinese University of Hong Kong  
**6th** in the Asia and **45th** in the world

### WELCOME MESSAGE

The MSc in Obstetric and Midwifery Care is designed to provide a comprehensive coverage in both advanced obstetric and midwifery practice. Areas of study include maternal and infant nutrition, optimizing childbearing and normal birth, latest development of prenatal diagnosis, monitoring women with complex health problems, clinical leadership, research methodology and critical appraisal skills.

It will be a good platform for those who want to extend their midwifery education, strive for clinical excellence and become influential midwifery leaders in future.

*Tak Yeung Leung*

## Programme Structure

Students must complete 26 units with six required courses and one elective course within the two-year normative period of study. Each course bears 1-5 units.



香港中文大學  
The Chinese University of Hong Kong



香港中文大學醫學院  
Faculty of Medicine  
The Chinese University of Hong Kong



### PROGRAMME DIRECTOR

Prof. Tak Yeung LEUNG  
Assistant Dean (Mainland Affairs)  
Professor  
Department of Obstetrics and Gynaecology  
The Chinese University of Hong Kong



### DEPUTY PROGRAMME DIRECTOR

Prof. Chit Ying Jessie LAI  
Associate Professor of Midwifery Practice  
Department of Obstetrics and Gynaecology  
The Chinese University of Hong Kong



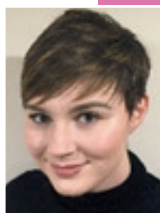
### PROGRAMME ADVISOR

Prof. Wai Tong CHIEN  
Director and Professor  
The Nethersole School of Nursing  
The Chinese University of Hong Kong

### OVERSEAS TEACHING FACULTY



Prof. Hannah DAHLEN  
Associate Dean  
Research and HDR  
Professor of Midwifery  
School of Nursing and Midwifery  
Western Sydney University, Australia



Ms. Rebekah MCCRIMMON  
Senior Lecturer & Course Leader  
School of Community Health and Midwifery  
University of Central Lancashire, UK

#### Nature Course Name

Required	Maternal and Infant Nutrition
Required	Clinical Leadership in Midwifery
Required	Advances Midwifery Practice Series
	(1) Practical Obstetric Ultrasound
	(2) Critical Care in Obstetric
	(3) Clinical Pharmacology in Obstetrics
Required	Research Methodology
Required	Project and Dissertation

#### Nature Course Name

Required	Professional Midwifery Practice Series
	(1) Promoting Normal Birth
	(2) Maternal Health and Well-Being in the Perinatal Period
Elective	Teaching and Learning in Midwifery Education
Elective	Grief Experience in pregnancy
Optional	Reproductive Medicine and Assisted Reproductive Technology
Optional	Genetic Counselling

# Course Features

- Heading to the 6th intake and currently the only local postgraduate taught master programme in midwifery
- OBSC5001 Maternal and Infant Nutrition is CERPs approved course and will be continuously renewed
- Combination of live webinar and face-to-face teaching mode will facilitate students to learn from renowned overseas and local speaker



- International renowned teaching faculty will inspire students to develop an analytical thinking and reflection of the contemporary practice
- Optional overseas hospital visit will be arranged for students to broaden their horizon (depending on the pandemic situation)



## Mode of Teaching

English is the medium of instruction. Cantonese may be supplemented when required. The course content is delivered using a combination of lectures, group discussions, role plays, computing sessions, critical appraisals of literature and presentations.

### CLASS SCHEDULE

Usually on Monday and Thursday evenings;  
Full day on Saturday occasionally

**Full day on 4 to 7 November 2024 inclusively**

### ASSESSMENT

Performance will be assessed through assignments, written examinations, presentations, group projects on research proposal.

## Application

### ADMISSION REQUIREMENTS

In addition to the general requirements of the Graduate School, local applicants should be Registered Midwives. Non-local applicants should have obtained a Bachelor's degree in midwifery, nursing, healthcare or related professionals from a recognised institution or have the equivalent academic or professional qualifications.

### APPLICATION PROCEDURES

For online application, please visit the Graduate School website at

<https://www.gs.cuhk.edu.hk/admissions/programme/medicine>

Application Fee: HK\$300

### APPLICATION DEADLINE

1st round:	31 October 2023
2nd round:	31 January 2024
Final round:	30 April 2024

### TUITION FEE

HK\$149,000



OUR PROGRAMME

### CONTACT US

Ms Jasmine Lee  
Tel: (852) 3505 2580  
Fax: (852) 2636 0008  
Email: [jasmine.cmlee@cuhk.edu.hk](mailto:jasmine.cmlee@cuhk.edu.hk)

Department of Obstetrics and Gynaecology  
The Chinese University of Hong Kong  
1/F, Block E, Prince of Wales Hospital, Shatin  
<http://www.obg.cuhk.edu.hk>