

MSc in Reproductive Medicine & Clinical Embryology

2-Year Part-Time Postgraduate Programme



QS World University Rankings 2023
Faculty of Medicine, CUHK
32nd in the world

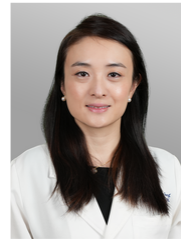
Times Higher Education Rankings 2023
The Chinese University of Hong Kong
6th in the Asia and **45th** in the world



香港中文大學
The Chinese University of Hong Kong



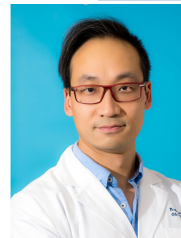
香港中文大學醫學院
Faculty of Medicine
The Chinese University of Hong Kong



PROGRAMME DIRECTOR

Prof. Jacqueline Pui Wah CHUNG

Associate Professor
Department of Obstetrics and Gynaecology
The Chinese University of Hong Kong



DEPUTY PROGRAMME DIRECTOR

Prof. David Yiu Leung CHAN

Assistant Professor
Laboratory Director of the Assisted Reproductive Technology Unit,
Department of Obstetrics and Gynaecology
The Chinese University of Hong Kong



PROGRAMME ADVISOR

Prof. Tin Chiu LI

Clinical Professor (Honorary)
Department of Obstetrics and Gynaecology
The Chinese University of Hong Kong



PROGRAMME ADVISOR

Prof. Christopher BARRATT

Head of Division
Systems Medicine & Professor of
Reproductive Medicine
University of Dundee

WELCOME MESSAGE

Based in the regional leading training centre of reproductive medicine, the CUHK Assisted Reproductive Technology (ART) Unit, our programme is designed to provide students the knowledge and skills of advanced clinical and laboratory technologies, to conceptualized scientific principles of reproductive medicine and human embryology in a clinical practice.

As a pioneer in IVF postgraduate education in Hong Kong, we will offer you insights to the diversified treatment options and high quality patient care by an outstanding faculty drawn from all over the world. Join us and expand your horizons through a series of study tours at regionally renowned ART centres. Your ability to achieve and act - both independently and as a member of a multidisciplinary team in the field - is what will make you stand out.

Jacqueline Chung

Programme Structure

Students must complete 30 units with 13 core courses within the two-year normative period of study. Each course bears 1-6 units.

- *Advanced Clinical Embryology*
- *Andrology*
- *Basic Clinical Embryology*
- *Cell Biology and Molecular Biology*
- *Clinical Issues and Controversies in ART*
- *Genetics in Reproductive Medicine*
- *IVF Equipment: Selection, Application and Maintenance*

- *IVF Laboratory Design*
- *IVF Laboratory Management and Communication*
- *Literature review*
- *Reproductive Medicine & Assisted Reproductive Technology - Overview part*
- *Reproductive Medicine & Assisted Reproductive Technology - Clinical part*
- *Research Methodology*

Course Features

- Personalized teaching schedule - tailored to meet the needs of a diverse student group, including both local and non-local students. Our specially designed teaching schedule includes on-campus classes that take place 4 times a year, spanning 4 consecutive days from Friday to Monday. During these classes, students will engage in hands-on workshops and have the opportunity to observe and learn in a practical setting.
- Career impact - With access to regional leading ART centres and a global professional network, you will establish life-long connections with your mentors, teachers and classmates worldwide and draw on their expertise and networks throughout your career.



Mode of Teaching

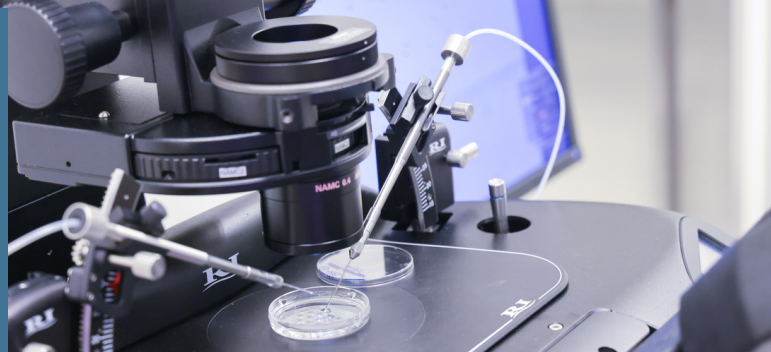
English is the medium of instruction. Lectures, clinical and laboratory attachments, group discussions, case studies, tutorials and conferences will be arranged to enhance students' understanding and performance.

ASSESSMENT

Performance will be assessed through examinations, clinical attachments, presentations and attendance.

RECOGNITION

MSc in Reproductive Medicine and Clinical Embryology, has obtained a quotable qualification approved by the Medical Council of Hong Kong.



- Academic excellence - Learn from our highly respected faculty whose world-class research advances in the field. Our faculty are also experienced practitioners who are in charge of clinics or laboratories
- Knowledge through experience - Put theory into practice through our living lessons consisting of bench-side class, study tours and intensive hands-on training on clinical embryology.
- Global perspectives - Join a vibrant and diverse community of students and faculty - 40% of our current class are non-local students from mainland China, Thailand, the Philippines and Sri Lanka.

Application

ADMISSION REQUIREMENTS

In addition to the general requirements of the Graduate School, applicants should have obtained a Bachelor's degree in medicine, healthcare, life science, laboratory science or related professions from a recognized institution or have the equivalent academic or professional qualifications.

APPLICATION PROCEDURES

For online application, please visit the Graduate School website at <https://www.gs.cuhk.edu.hk/admissions/programme/medicine#m-sc-in-reproductive-medicine-and-clinical-embryology>
Application Fee: HK\$300

APPLICATION DEADLINE

1st round:	31 October 2023
2nd round:	31 January 2024
Final round:	30 April 2024

TUITION FEE

HK\$165,000



OUR PROGRAMME

CONTACT US

Ms Karen Yu
Tel: (852) 3505 1534
Fax: (852) 2636 0008
Email: kapoyu@cuhk.edu.hk

Department of Obstetrics and Gynaecology
The Chinese University of Hong Kong
1/F, Block E, Prince of Wales Hospital, Shatin
<http://www.obg.cuhk.edu.hk>